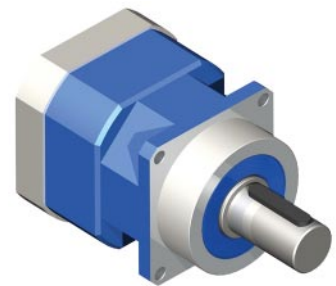


GBPC-140x-NU Series

FEATURES

- Backlash as low as 3 arc-min
- Gear ratios from 3 to 100
- Available in 1 and 2 stage models
- Long wear life, over 20,000
- Lifetime lubrication
- High durability



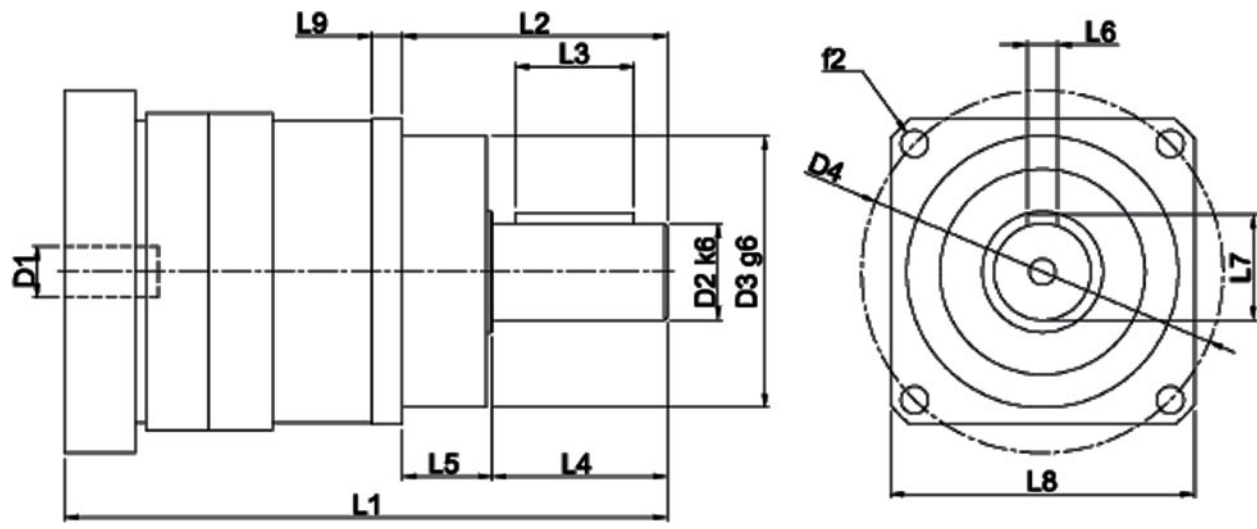
DESCRIPTION

The GBPC-140-NU Series Planetary Gearbox offers you the precision you need at the prices you want! This Planetary Gearbox is designed with very low backlash for motion control, automation, and robotic applications requiring precise position requirements. This Planetary Gearbox will match your servo or stepping motor. Built with the design goal of offering a cost effective product without sacrificing quality, you will find that this Planetary Gearbox offers you an extraordinary value. You will find online prices on this website along with all the information you need to know to select the perfect Planetary Gearbox for your applications.

SPECIFICATIONS

Model #	Gear Ratio (X:1)	Rated Output Torque (oz-in)	Max Output Torque (oz-in)	Rated Input Speed (RPM)	Maximum Input Speed (RPM)	Stages	Backlash Maximum (arcmin)	L1 Length (mm)	L2 Length (mm)	Weight (lbs)
GBPC-1401-NU-003-yyyyy-zzz	3	29744	141600	3800	5500	1	3	292	112	42.6
GBPC-1401-NU-004-yyyyy-zzz	4	48144	178416	3800	5500	1	3	292	112	42.6
GBPC-1401-NU-005-yyyyy-zzz	5	48144	178416	3800	5500	1	3	292	112	42.6
GBPC-1401-NU-007-yyyyy-zzz	7	48144	178416	3800	5500	1	3	292	112	42.6
GBPC-1401-NU-010-yyyyy-zzz	10	29744	141600	3800	5500	1	3	292	112	42.6
GBPC-1402-NU-012-yyyyy-zzz	12	56640	178416	3800	5500	2	3	342	112	51.4
GBPC-1402-NU-016-yyyyy-zzz	16	56640	178416	3800	5500	2	3	342	112	51.4
GBPC-1402-NU-020-yyyyy-zzz	20	56640	178416	3800	5500	2	3	342	112	51.4
GBPC-1402-NU-025-yyyyy-zzz	25	56640	178416	3800	5500	2	3	342	112	51.4
GBPC-1402-NU-035-yyyyy-zzz	35	56640	178416	3800	5500	2	3	342	112	51.4
GBPC-1402-NU-040-yyyyy-zzz	40	56640	178416	3800	5500	2	3	342	112	51.4
GBPC-1402-NU-050-yyyyy-zzz	50	56640	178416	3800	5500	2	3	342	112	51.4
GBPC-1402-NU-070-yyyyy-zzz	70	56640	178416	3800	5500	2	3	342	112	51.4
GBPC-1402-NU-100-yyyyy-zzz	100	35408	141600	3800	5500	2	3	342	112	51.4

* yyyyy denotes motor pilot, zzz denotes input shaft diameter, see "Matching the Gearbox to Your Motor" on the next page. L010572



L3	70mm	L4	82mm	L5	30mm
L6	12mm	L7	43mm	L8**	141mm
L9	12mm	D1	32 - 38mm	D2 k6	40mm
D3 g6	130mm	D4	165mm	f2	11mm

** depending on motor, value may vary.

Radial Load:	2475 lbs - Force	Axial Load:	2385 lbs - Force
Operating Temperature:	-4° - 194° F	Noise Level:	under 67 dB
Efficiency:	96%	IP Rating:	IP65

Matching the Gearbox to Your Motor

There are a few details that you need to consider before purchasing a gearbox. The gearbox must be manufactured to match the motor's bolt hole circle, pilot diameter, shaft diameter, and shaft length. This is handled by a code in the last two sections of the part number. For instance, in the part number GBPC-1401-NU-003-AAyy1-zzz, the "AAyy1" is for an Anaheim Automation NEMA yy Motor pilot and the shaft length. The "zzz" is for the shaft diameter of 0.zzz". For non standard Anaheim Automation or custom motors contact factory for complete part number.

Parameter	Range	Typical
Input Shaft Diameter	Stage 1: 1 mm to 38 mm Stage 2: 1 mm to 34 mm	32 mm shaft diameter
Input Shaft Length	11 mm to 112 mm	"AAyy1" - zzz"
Pilot	Stage 1: 28 mm to 300 mm Stage 2: 34 mm to 300 mm	"AAyy1" - zzz"
Bolt Hole Circle	1 mm to 350 mm	"AAyy1" - zzz"